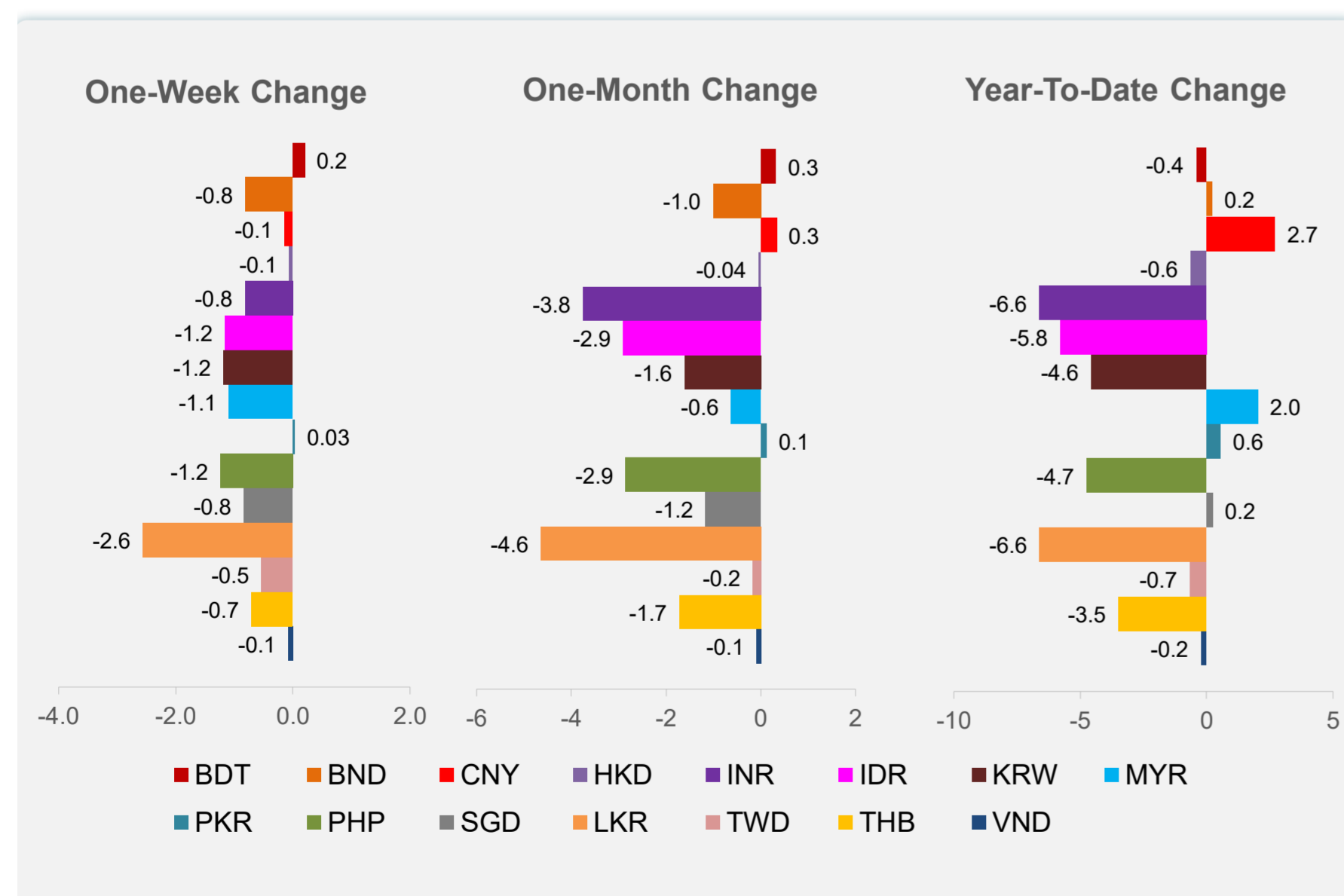
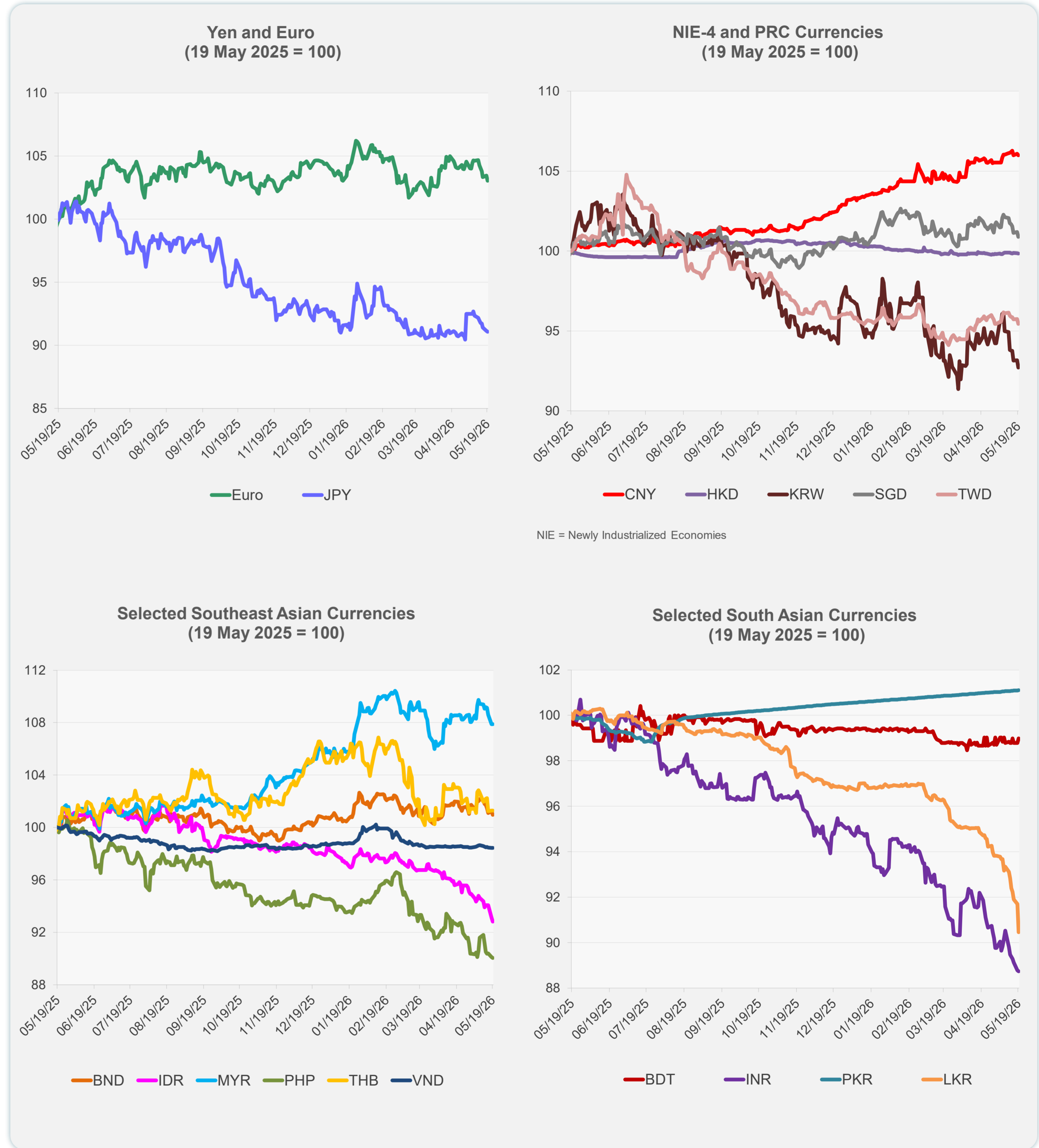
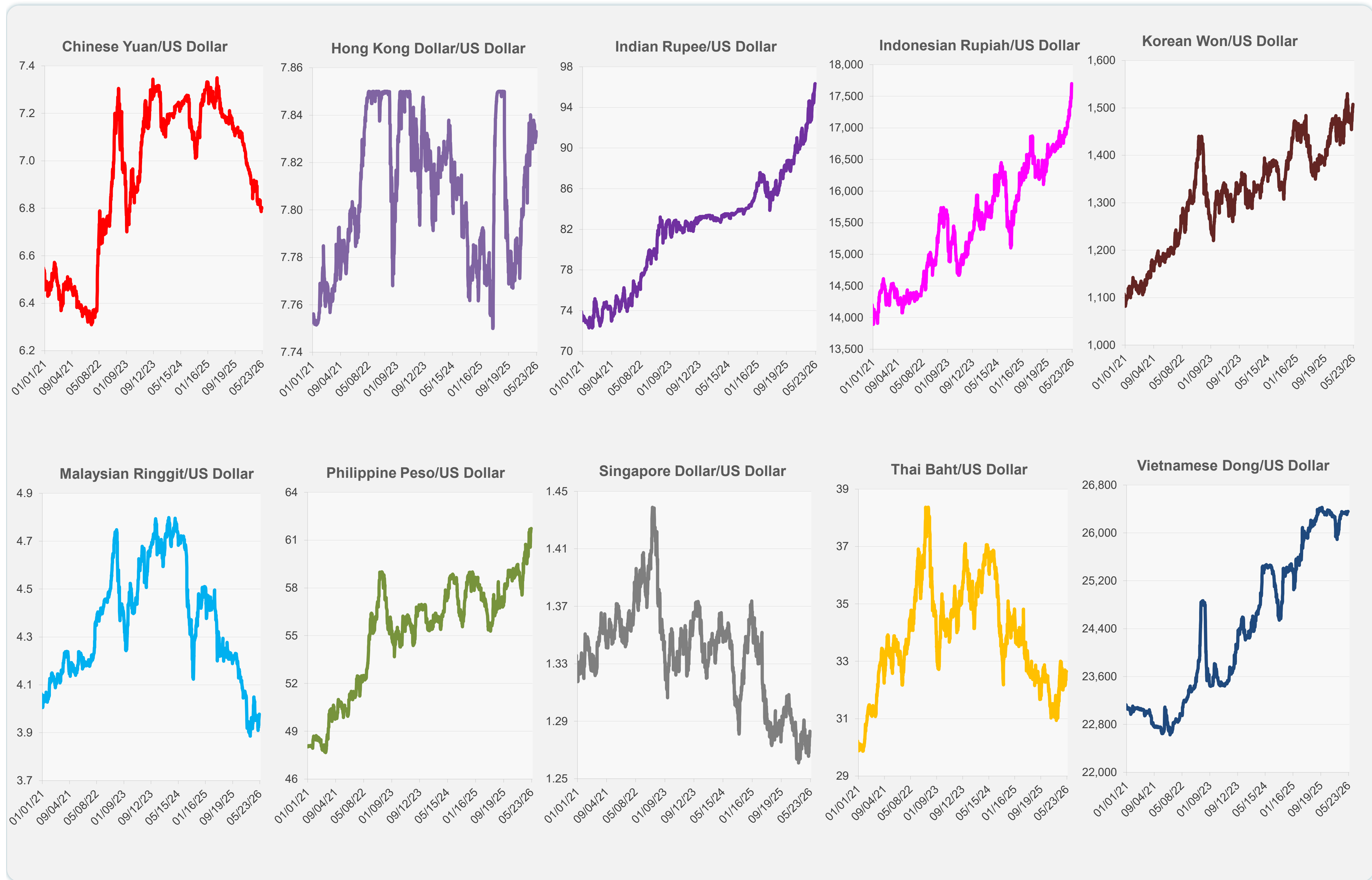


	Latest Closing	% change from Previous Day	% change from 01-Jan-26
Euro	0.86	-0.39	-1.26
Japanese yen (JPY)	159.04	-0.07	-1.92
Bangladeshi taka (BDT)	122.75	0.20	-0.41
Brunei dollar (BND)	1.28	-0.28	0.21
Chinese yuan (CNY)	6.80	-0.08	2.71
Hong Kong dollar (HKD)	7.83	-0.03	-0.63
Indian rupee (INR)	96.35	-0.05	-6.61
Indonesian rupiah (IDR)	17,700.00	-0.31	-5.79
Korean won (KRW)	1,507.80	-0.50	-4.56
Malaysian ringgit (MYR)	3.98	-0.01	2.02
Pakistan rupee (PKR)	278.55	0.01	0.56
Philippine peso (PHP)	61.73	-0.07	-4.74
Singapore dollar (SGD)	1.28	-0.30	0.23
Sri Lanka rupee (LKR)	331.50	-1.36	-6.61
Taipei,China NT dollar (TWD)	31.65	-0.33	-0.67
Thai baht (THB)	32.65	0.00	-3.49
Vietnamese dong (VND)	26,359.50	0.00	-0.23



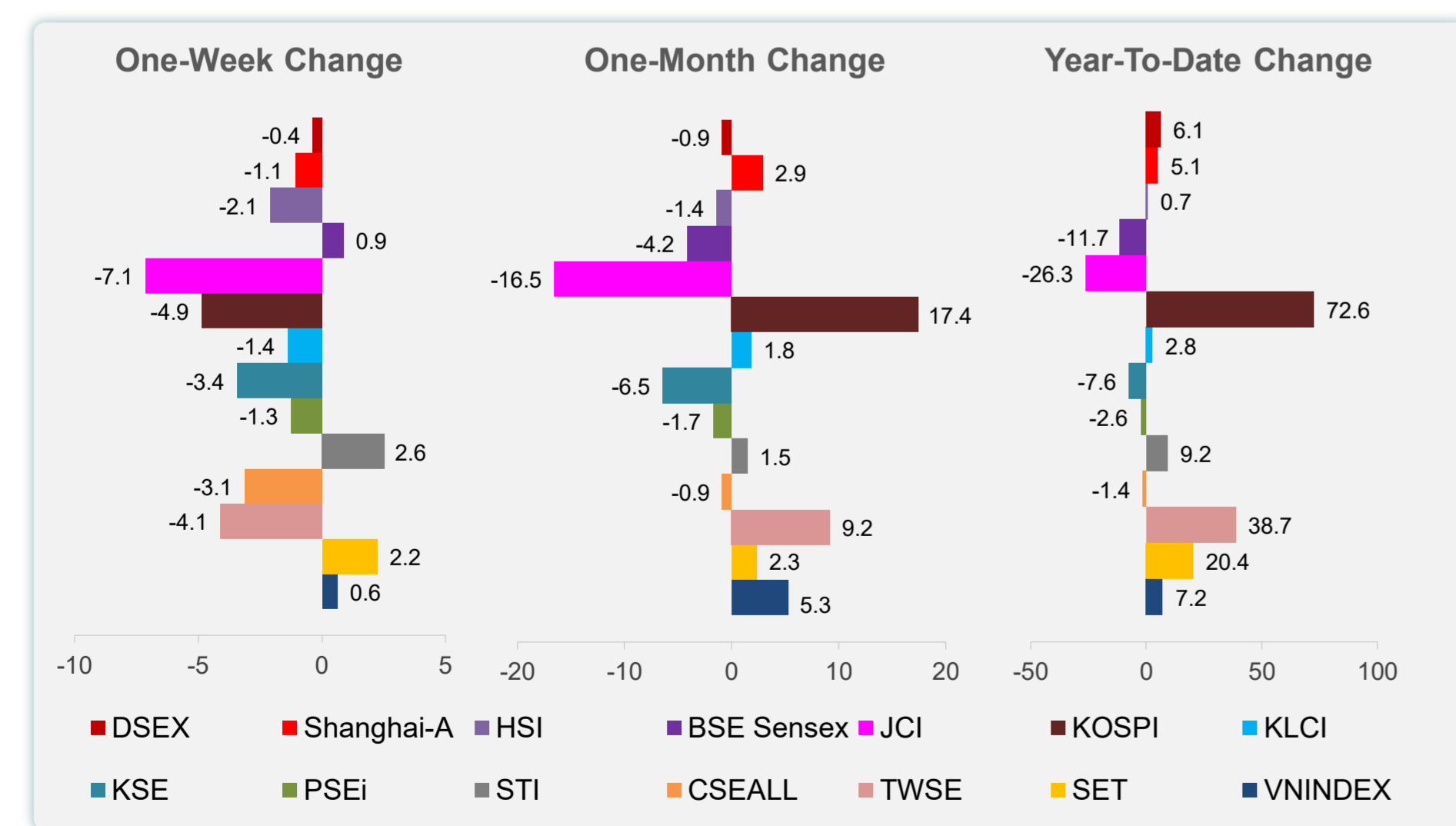
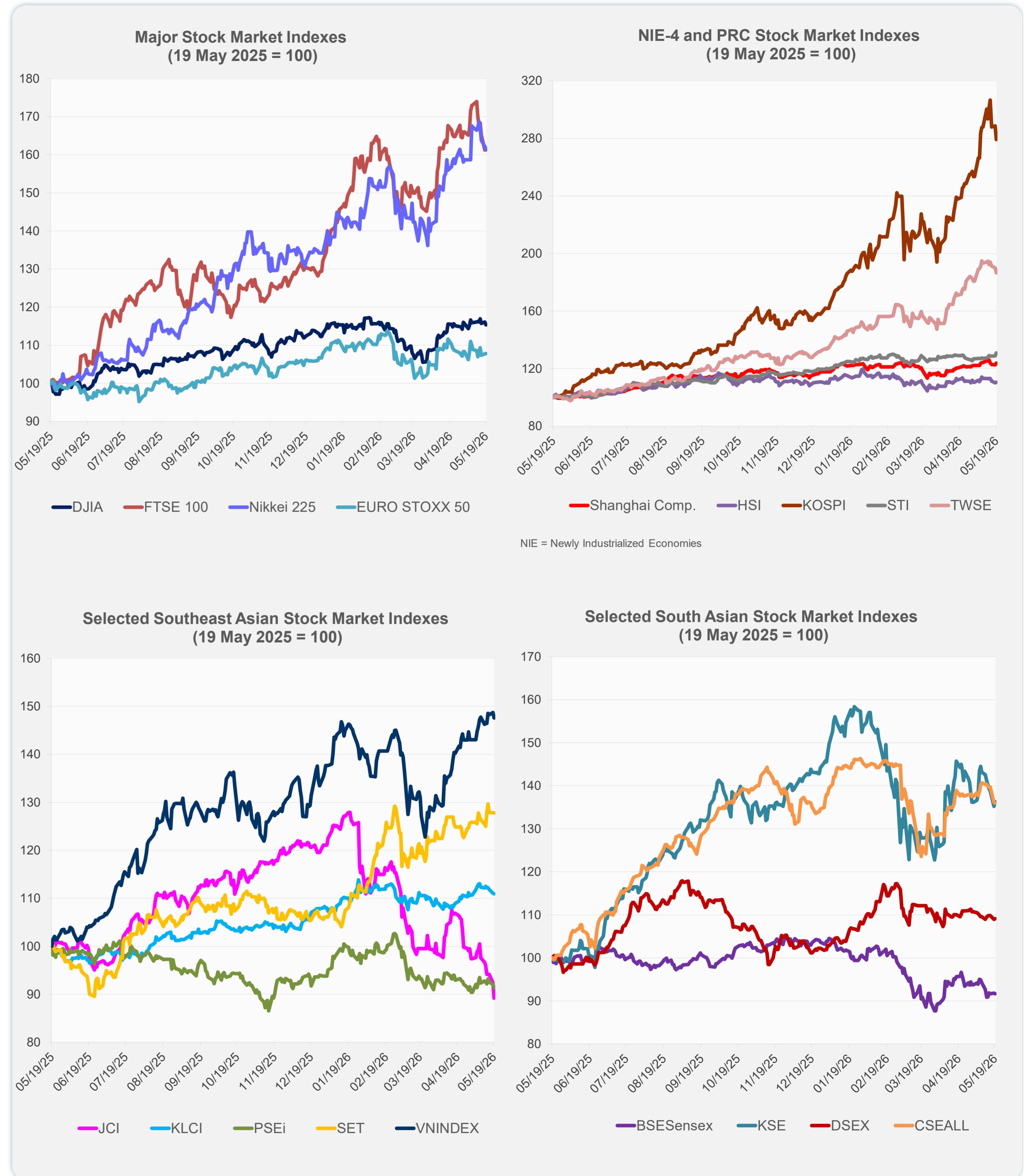
Note: Negative/Decreasing values indicate depreciation of local currency, and positive/increasing values indicate appreciation.
Source: ADB calculations using data from Bloomberg and Haver Analytics.



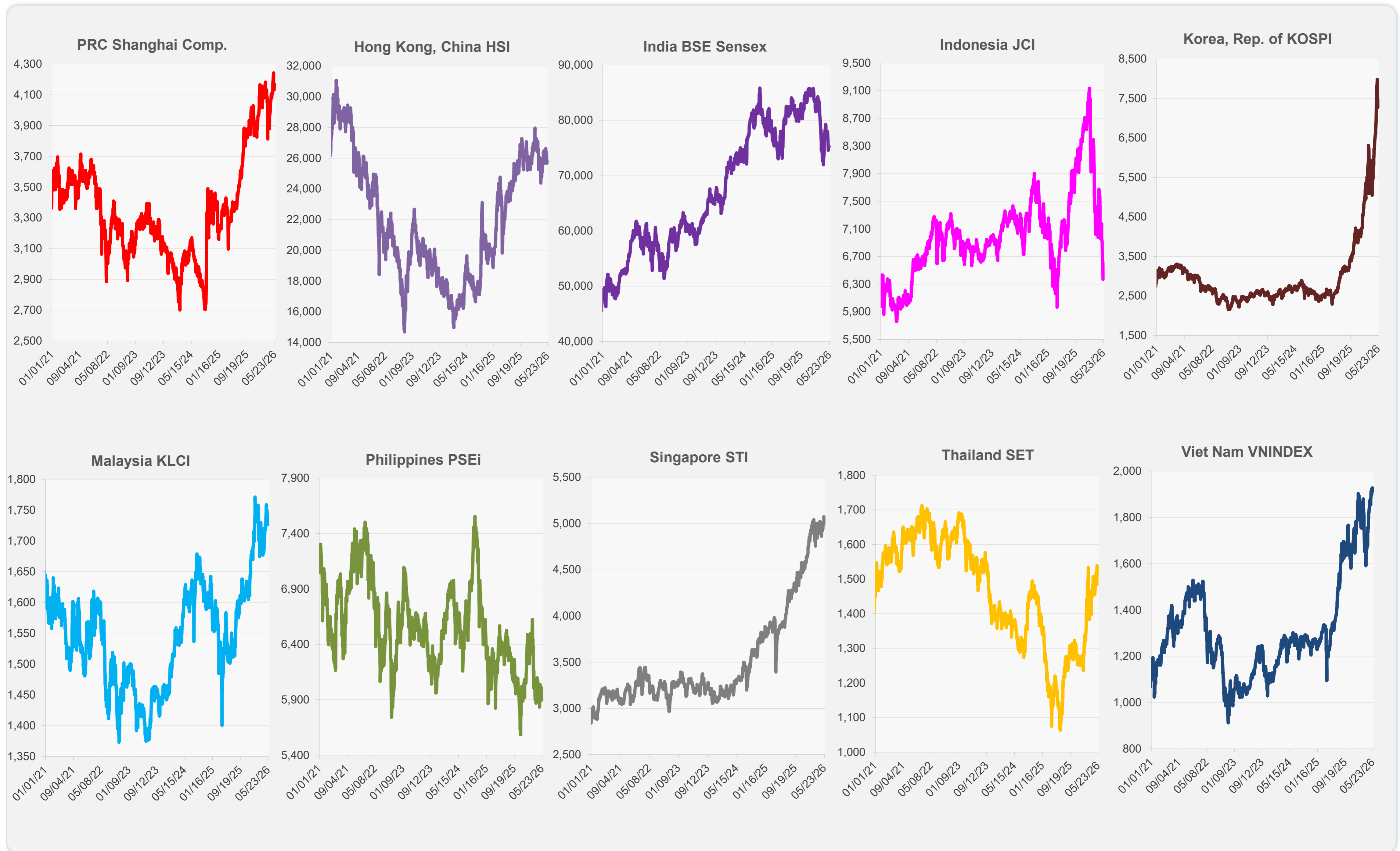
Source: Haver Analytics.

Daily Market Watch
STOCK INDEXES

	Latest Closing	% change from Previous Day	% change from 01-Jan-26
US Dow Jones Ind Avg	49,363.88	-0.65	2.71
US NASDAQ	25,870.71	-0.84	11.31
US S&P 500	7,353.61	-0.67	7.42
UK FTSE 100	14,029.54	0.00	24.58
EURO STOXX 50	5,851.16	0.04	1.03
Japan NIKKEI 225	60,550.59	-0.44	20.28
Bangladesh DSEX	5,211.54	0.16	6.13
PRC Shanghai Comp.	4,169.54	0.92	5.06
Hong Kong, China HSI	25,797.85	0.48	0.65
India BSE Sensex	75,200.85	-0.15	-11.72
Indonesia JCI	6,370.68	-3.46	-26.32
Korea, Rep. of KOSPI	7,271.66	-3.25	72.55
Malaysia KLCI	1,726.45	-0.07	2.76
Pakistan KSE 100	163,123.80	0.80	-7.57
Philippines PSEi	5,896.80	-0.75	-2.58
Singapore STI	5,072.34	1.51	9.17
Sri Lanka CSEALL	22,298.07	-0.07	-1.44
Taipei, China TWSE	40,175.56	-1.75	38.71
Thailand SET	1,516.69	-0.07	20.40
Viet Nam VNINDEX	1,912.93	-0.78	7.20



Sources: ADB calculations using data from Bloomberg and CEIC Data Company.



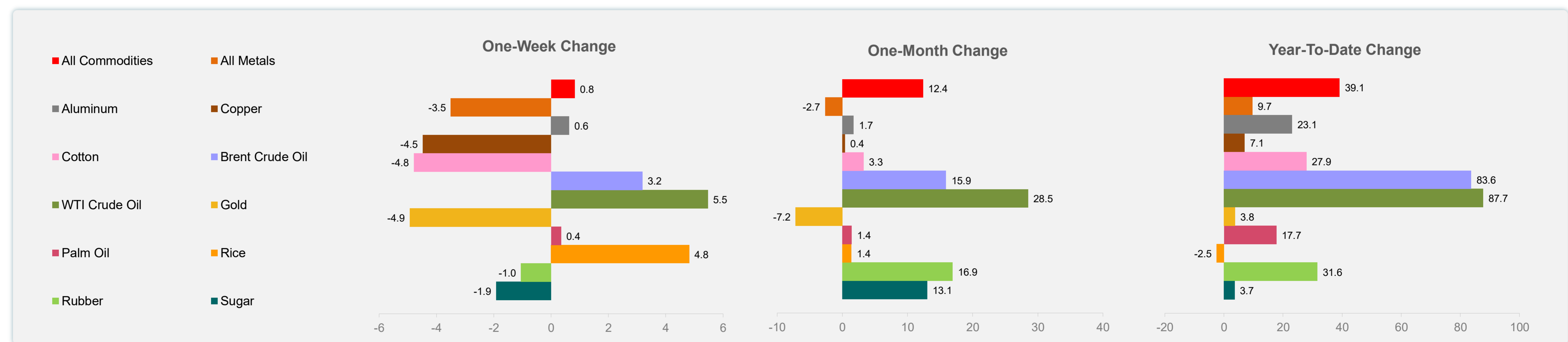
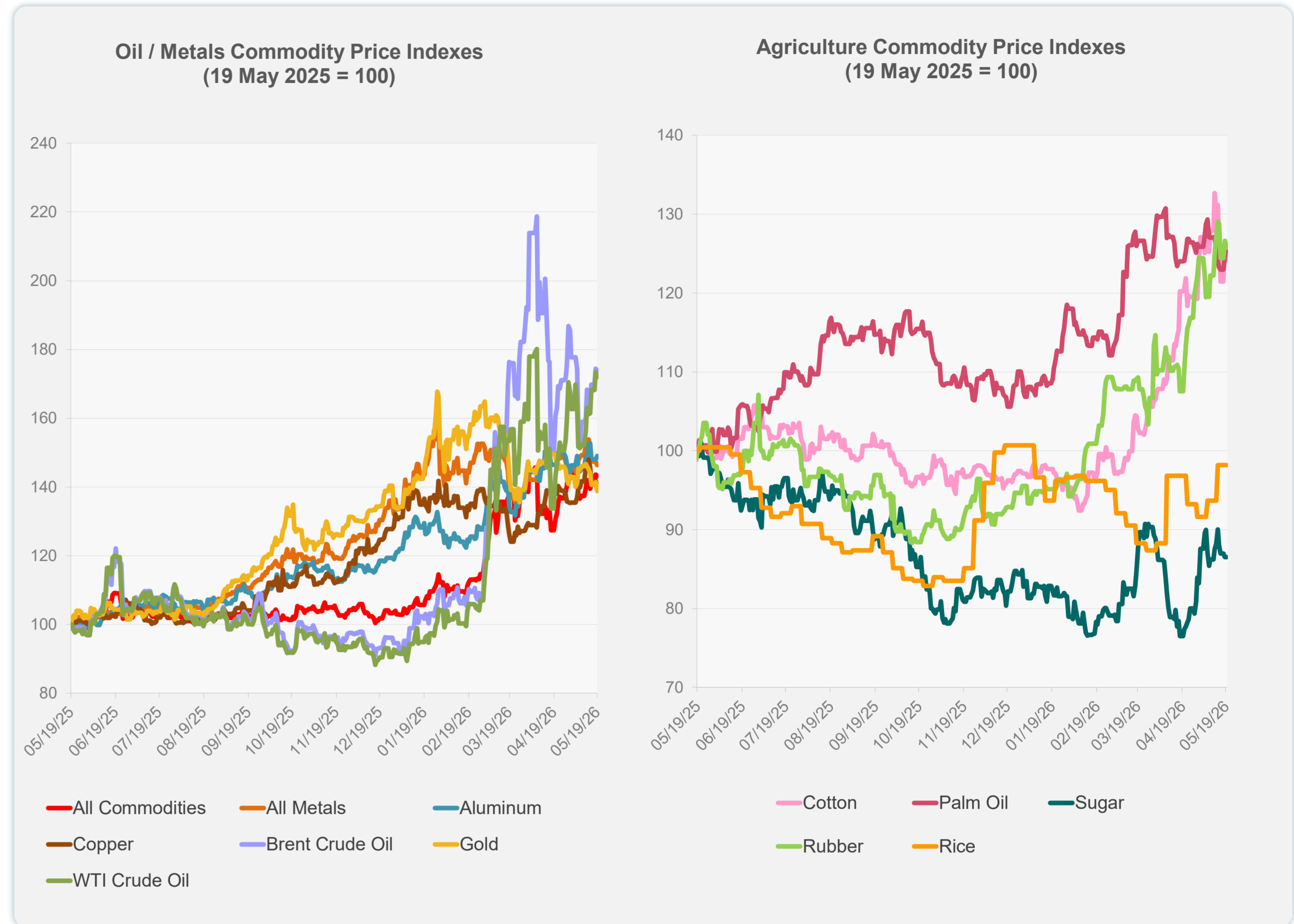
Sources: ADB calculations using data from Bloomberg and CEIC Data Company.

Daily Market Watch
COMMODITY PRICES

20 May 2026, 9:00 AM Manila

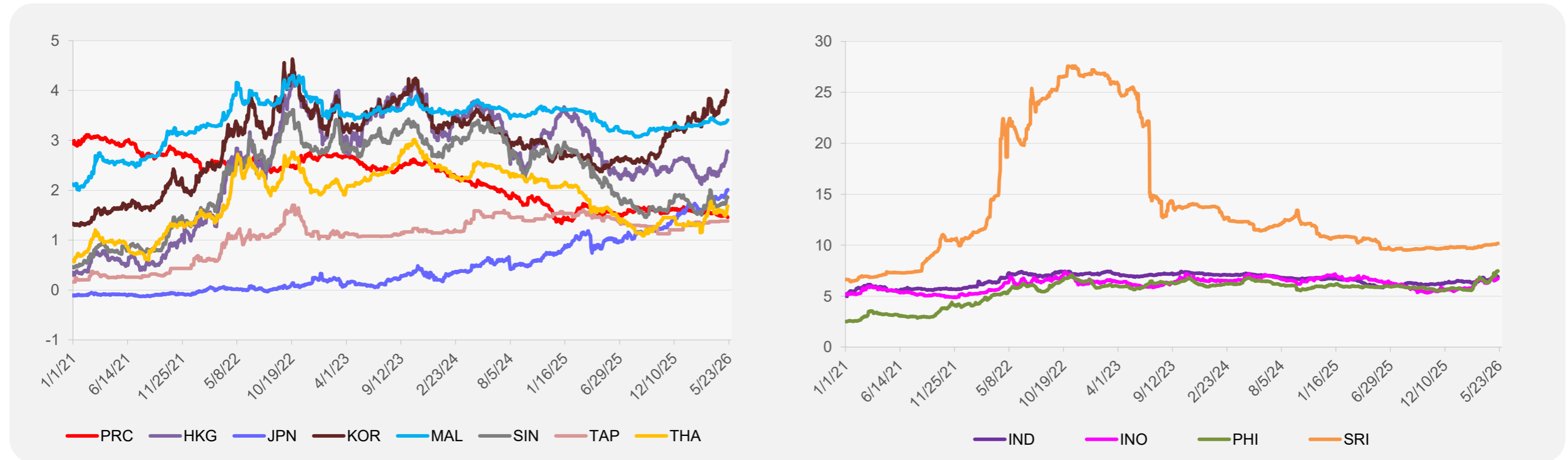
	Unit	Latest Closing	% change from Previous Day	% change from 01-Jan-26
S&P All Commodities	US\$	763.15	-0.29	39.13
S&P All Metals	US\$	486.69	-0.70	9.67
Aluminum	US\$/metric ton	3,652.63	0.69	23.07
Copper	US\$/metric ton	13,333.90	-1.47	7.07
Cotton	US cents/lb	79.33	-1.70	27.91
Brent Crude Oil	US\$/barrel	114.67	-0.39	83.63
WTI Crude Oil	US\$/barrel	107.77	-0.82	87.69
Gold	US\$/troy oz	4,482.61	-1.84	3.78
Palm Oil	US\$/metric tonne	1,140.58	0.88	17.75
Rice ¹	US\$/metric ton	435.00	0.00	-2.47
Rubber ²	US\$/kg	283.00	-0.67	31.63
Sugar	US cents/lb	15.33	0.00	3.65

¹ Latest closing price from 13 May 2026.
² Singapore Exchange, Ribbed Smoked Sheet Rubber.

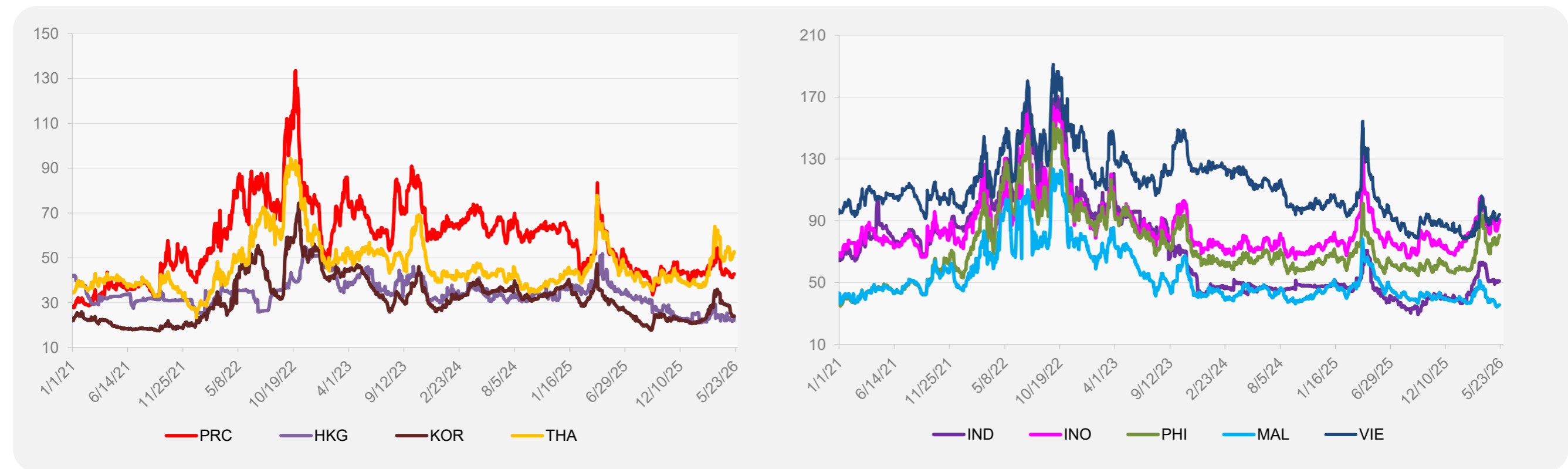


Source: ADB calculations using data from Bloomberg.

5-YEAR LOCAL CURRENCY GOVERNMENT BOND YIELDS (%)



5-YEAR CREDIT DEFAULT SWAP¹



¹ In USD and based on sovereign bonds.
Source: ADB calculations using data from Bloomberg.